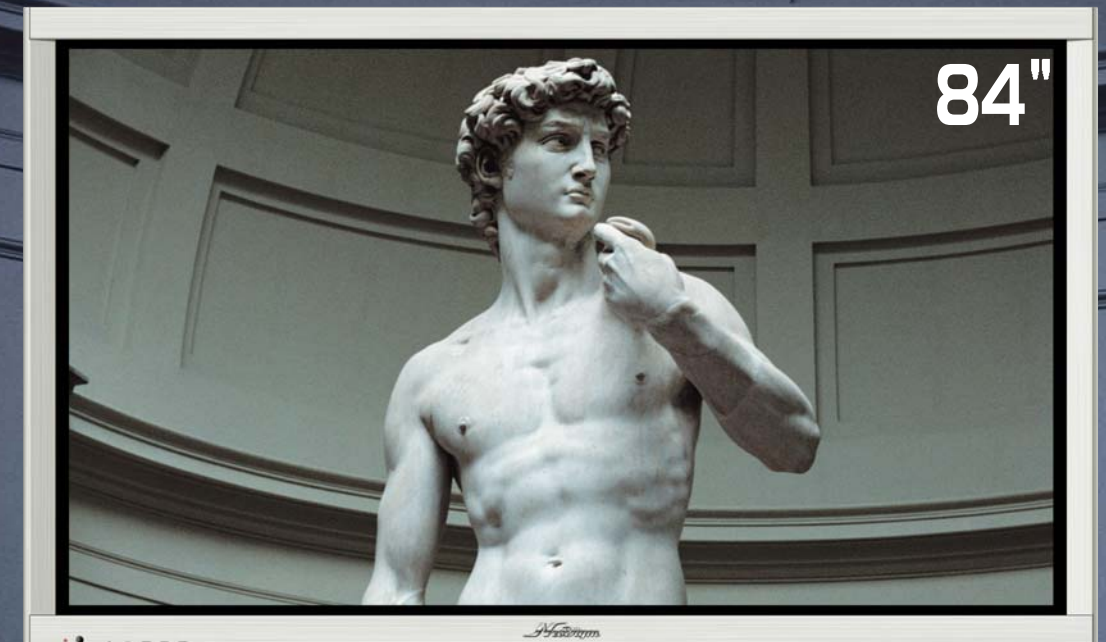


84" Ultra Slim  
Large-screen Digital Image Technology

*NeoDigm*  
Seamless Multi PDP



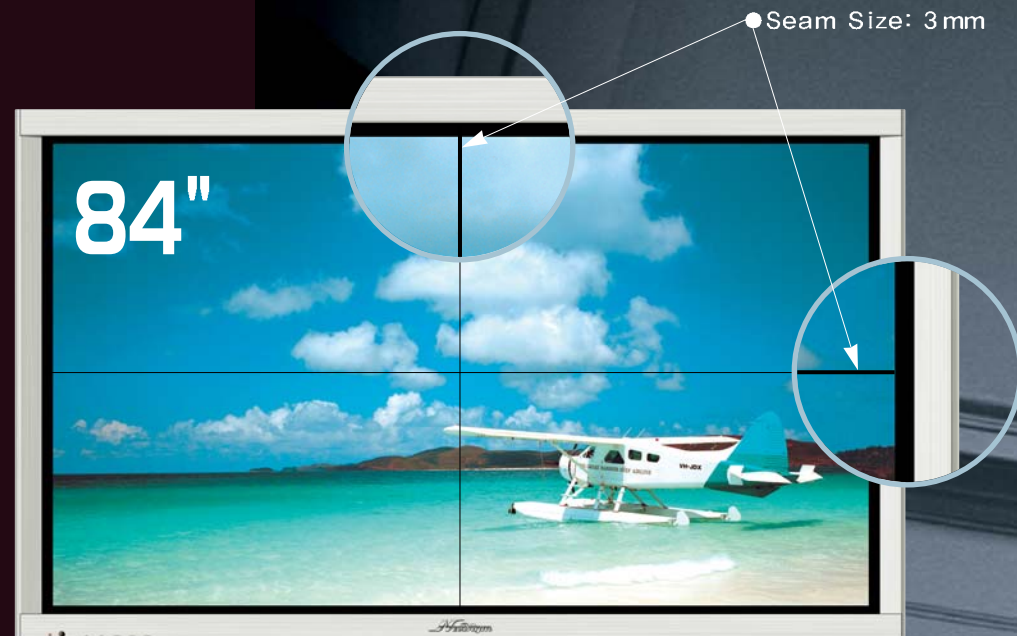
*NeoDigm*  
ORION PDP CO.,LTD.



PK840I

Witness a vivid, large as life screen  
Perfection created through up-to-the-minute hi-tech PDP

# Seamless Multi PDP

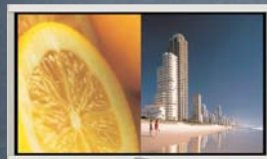


## New Seamless Technology

Orion PDP developed new technology to create virtually Seamless Multi PDPs. The newly developed edge structure allows for impressive reduction between screens. The result has allowed for multi PDPs to enter a new seamless era. Pictures can now appear as one complete image, not cut up as in Conventional Multi PDP models.

## Conventional Multi PDP

## Division Type



## Enhanced Image Qualities and Versatile Usages

### • 3D Y/C Digital Comb Filter

The 3D Y/C Digital Comb Filter performs field-by-field comparisons of the display image to accurately separate the colour from the black-and-white information. It removes dot crawl and hanging dots both horizontally and vertically.

### • Motion Adaptive Progressive Scanning

New I.P (Interface to Progressive) conversion uses an automatic adaptive temporal/spatial algorithm to maximize the display resolution in stable picture areas, eliminating artifacts that occur around moving objects.



PK8401



Conventional

### • Improved Moving Pictures

Orion plasma display provides smooth, natural-looking moving pictures with excellent detail thanks to greatly improved precision in the False-Edge Predictor circuit. This circuit identifies areas where a moving picture is subject to degradation and dramatically reduces the picture noise there.

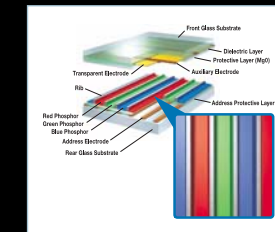
### • 3 Dimensional Progressive Scan

This function turns the interlaced signals used in present broadcasts into the progressive scan signals for optimal performance in the dot matrix system of plasma displays. Our 3 Dimensional Progressive Scan extracts the interpolated pixel data with the highest correlation from a total of 10 lines of image information for three fields (the present field and the fields before and after). This greatly decreases the blurry motion that tends to occur with conventional systems, giving you clear, natural moving pictures.

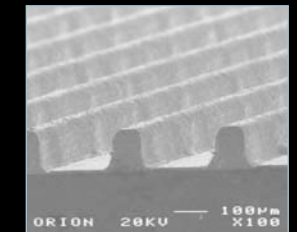
## PDP Technology

Orion plasma display employs a panel with a unique asymmetrical cell structure that achieves both high brightness and crisp whites - a combination not possible with previous systems. The asymmetrical arrangement of the red, blue and green cells that control color reproduction results in a dramatically improved light-emitting balance of the three primary colors. This reproduces purer whites while maintaining a high level of brightness. The use of a wavelength-selective filter on the front panel and new green phosphors also expands the range of color reproduction, resulting in rich, natural color expression.

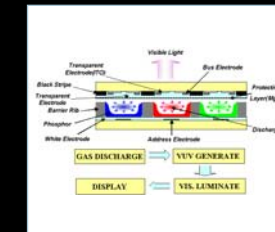
Orion PDP's straight-type cell structure



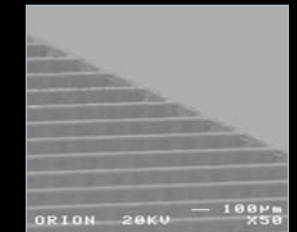
Actual object picture 1



Orion PDP's straight-type cell structure



Actual object picture 2



PDP technology's latest innovation  
Large screen high-definition digital images spread before your eyes  
**Your dreams come true**



**Orion Plasma Display**

Orion's high performance Seamless Multi PDP plasma displays are designed for both commercial and home applications. Now you can easily find Orion's plasma display in homes as well as in conference rooms, hotel lobbies, hospitals, airports and train stations. They provide wide viewing angles, flicker-free pictures, clear images and room-saving designs. Orion's state of the art and accumulated technology in the field of PDP business makes your life convenient and meets your needs and desires perfectly. Orion's PDP is the best solution for your success. Let's see the world through Orion's PDP.



■ Office reception presentation



■ Conference room



■ Network Monitoring Facilities



■ Restaurant



■ Meeting room



■ Shopping mall / Department store

**Applications**

**1. Information and advertisement**

- education center
- concerts / events
- web conferencing

**2. Observation, Security**

- highway control center
- traffic equipment monitoring
- power plant control center
- subway and train control centers
- building security control center

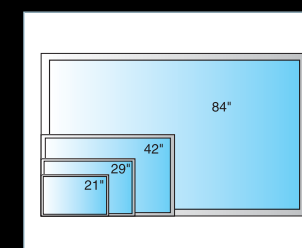
**3. Public safety centers**

- fire station
- police station
- building IBS station
- natural disaster center

**4. Communications**

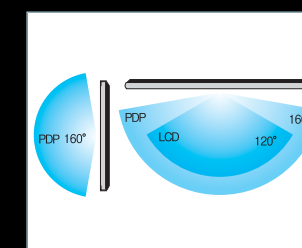
- Internet data center
- information call center
- network center
- Information network center

**5. Digital Integrated Command Control Center**



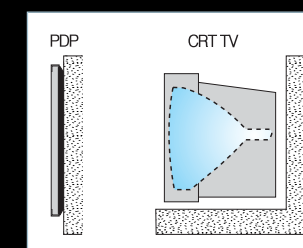
**Size comparison**

Bigger! Wider! Thinner!  
Install anywhere



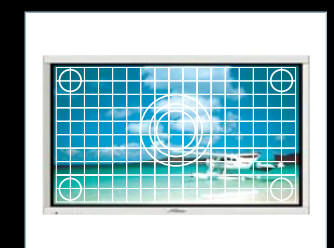
**Wide viewing angle**

With wider view angles as great as 160 degrees in both horizontal and vertical planes, as well as no color spreading and Flicker-free, you can enjoy large-screen images.



**84" Ultra-thin large screen**

The 84" ultra-thin multi PDP was created by advanced plasma technology that offers designers versatile installation options to suit virtually any application.



**Unaffected by magnetic interference**

Unlike CRT device, PDPs do not suffer from image distortion or color inaccuracy due to magnetic fields

# NeoDigm

## PK8401



### Seamless Multi PDP

#### Future Display

Its brightness and ultra-wide screen size will present viewers with mesmerizing image to view.

The novel exterior design and the attachment capability of the product will Maximize the effective use of living space. Doubtlessly, the product is the most promising candidates of the future display market.

#### UXGA Compatible

To assure compatibility with various PC display modes up to UXGA, Seamless Multi PDP automatically switches the scanning frequency to match the input signal. It offers a horizontal scanning rate of 15 kHz up to a very high 75 kHz, and a vertical scanning rate of 50 Hz to 75Hz. The PK8401 features ultra-high resolution of 1706 x 960 pixels and can display VGA, SVGA and XGA as well as down-converted SXGA and UXGA.

#### HDTV Monitor

Seamless Multi PDP lets you take advantage of the superior picture quality available from today's most advanced media. You can connect component video (Y, Pb/Cb, Pr/Cr) inputs to the unit and view digital TV broadcasts in either HDTV (1080i or 720p), EDTV (480p) or SDTV (480i) formats. The 1706 x 960 resolution of the PK8401 fully reproduces high-definition pictures from 720p HDTV signals.

\* In order to view DTV programming, the plasma display must be connected to a separate DTV digital receiver.

#### RS232C Control

Operation can be controlled by a personal computer via the plasma display's built-in RS232C interface. This serial interface makes it possible to control a variety of sources as a single system.

### ■Features

- large screen Seamless Multi PDP
  - screen size : 84"
  - Seam Size : 3mm
- So slim, install anyplace. No limits.
- Easy to install lightweight, slim design
- Able to display several different magnifications possible (4\*4)
- From VGA to HD, All sources are beautifully displayed.
- With the RS-232c, the system can be quickly and easily controlled

### ■Specifications

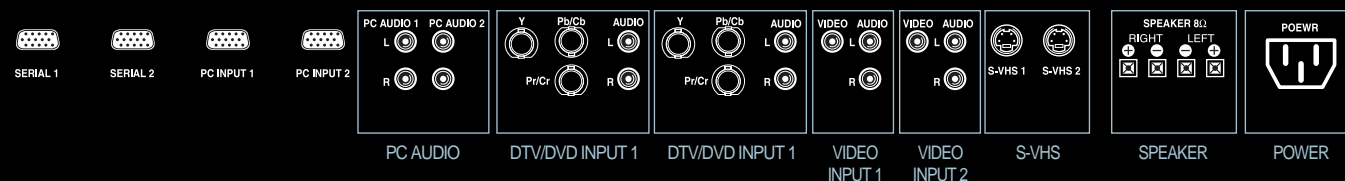
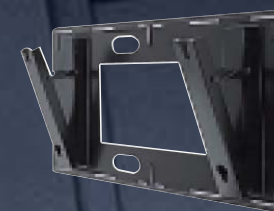
- Screen size : 84"
- Seam size: under 3mm
- Number of pixels: 1706(w) x 960(v)
- Brightness: 600cd/m (module)
- Contrast Ratio : 2500 : 1 (dark room)
- Input signal :
  - Analog RGB : VGA, SVGA, XGA, SXGA, UXGA
    - . Input terminal : D-sub 15p
    - . Input frequency : Fh=15KHz ~ 75KHz
    - Fv= 50Hz ~ 75Hz
  - Composit Video : NTSC, PAL, SECAM
    - . Input terminal : RCA
  - S-Video
    - . Input terminal : 4Pin Mini Din
  - Component Video : Y, Pb/Cb, Pr/Cr
    - . Input terminal : BNC

### ■Dimensions (W x H x D)

- Dimension : 2001 x 1190 x 105
- Weight : 130 kg (without stand)

### ■Option

- Wall hanging Bracket
- Stand



#### 1. RS-232C Connecting Terminal

- Input terminal for factory setup

#### 2. PC Signal Input Terminal

- Input signal for computer analog signal

#### 3. PC Audio Input Terminal

- Input terminal of audio signal for PC

#### 4. DTV, DVD Input Terminal

- Input terminal of Y, Pb/Cb, Pr/Cr for DTV, DVD

- Input terminal for audio signal

#### 5. Composite Video Input Terminal

- Input terminal for composite video

- Input terminal for audio signal

#### 6. S-VIDEO Input Terminal

- Input terminal for Y/C signal

#### 7. Speaker Connecting Terminal

- Connecting terminal for other speaker, Red(+), Black(-)

#### 8. Power Cord Connector

- Connecting terminal for AC outlet power cord

