

# HP TouchSmart IQ815 Desktop PC Product Specifications



## Product release information

### Product number

FQ451AA

### Country/region sold in

- United States
- Canada

## Display

### 64.77 cm (25.5 inch) LCD panel display with touchscreen

- Resolution: 1920 x 1200 @ 60Hz
- Touch technology: Optical Touch
- Touch points: 2 supported
- Colors: 16.7 million
- Color gamut: 92%
- Response time: 5 ms (on/off)
- Contrast ratio: 1000:1
- Image brightness: up to 400 nits

## Motherboard

## IMISR-CF (Eve)

Figure 1: Motherboard top view



Image of motherboard

- Manufacturer: Pegatron
- Form factor: microATX - 24.0 cm (9.45 inches) x 21.99 cm (8.66 inches)
- Chipset: Intel Mobile GM965 Express
- Memory sockets: 2 x DDR2
- Front side bus speeds: 800 and 667 Mhz
- Processor socket: P (NOTE: Supports P core with front side bus speed of 800MHz only.)
- Expansion Slots:
  - 1 PCI Express x16 slot (for MXM graphics card included on some models)
  - 2 PCI Express x1 minicard slot
- For more details, see [Eve motherboard specifications](#) .

## Processor

### Intel Core 2 Duo T5850

Figure 2: Intel Core 2 Duo logo



Image of Intel logo

- Operating speed: Up to 2.16 GHz
- Number of cores: 2
- Socket: P
- Bus speed: 667 MHz

## Processor upgrade information

Socket type: P (for mobile processors)

Motherboard supports the following processor upgrades:

- Core 2 Duo (Merom)
- Core 2 Duo (Penryn) (supports Penryn core with front side bus speed of 800 MHz only)

## Memory

### 4 GB

- Amount: 4 GB
- Speed: DDR2 SO DIMM (message as PC2-5300)

## Memory upgrade information

- Dual channel memory architecture
- Two DDR2 SO-DIMM (200-pin) sockets
- Supported SO-DIMM types:
  - PC2-4200 (DDR2-533 MHZ)
  - PC2-5300 (DDR2-667 MHZ)
  - PC2-6400 (NOTE: Running speed is 667 MHZ)
- Non-ECC memory only, unbuffered
- Supports 2GB DDR2 SO-DIMMs
- Supports installation of up to 4 GB\* RAM
  - All 4.0 GB is addressable on 64-bit operating systems
  - Approximately 3.2 GB is addressable on 32-bit operating systems

## Video graphics

### NVIDIA GeForce 9300M GS

Figure 3: Video card



Image of video card

- Interface: PCI Express x16
- Maximum resolution: 1920x1200 at 75 Hz
- Blu-ray Disc: playback up to 1080p
- 256 MB onboard memory

## Integrated graphics using nVidia GeForce 9300M

\*Integrated video is not available if a graphics card is installed.

- Integrated graphics using nVidia GeForce 9300M
  - PCIe x16 interface
  - MXM connector
  - 256 MB
- GeForce 9600M-GS graphics card is supported by some models beginning in Fall 2008.
- Integrated graphics using Intel GMA 3100
  - Enabled for selected Touchsmart models without discrete graphics card

## Sound/Audio

### Integrated High Definition Audio

- Audio codec: ADI AD1984B
- Supports 2 audio channels through an analog connection
- Supports one S/PDIF digital connection

## Speakers

- Channels: 2.0 stereo (2 speakers)
- Power: 4W per speaker

## Microphone

- Interface: Integrated 2 channel (stereo array)

## TV-Tuner

### AVerMedia NTSC/ATSC A327 (hardware encoder)

Figure 4: TV Tuner card top view

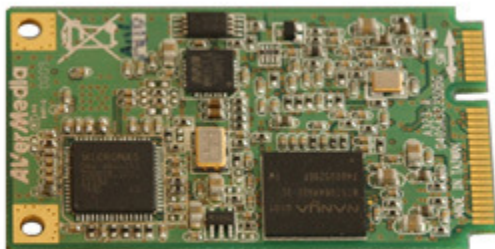


Image of TV tuner card

- Interface: PCI Express
- Supported transmission standards:
  - ATSC (digital)\*
  - NTSC (analog)

*\* Requires an antenna*

- Either NTSC or ATSC signal is available. You cannot use both at the same time.

## Networking

### LAN: 1000-Base-T

- Interface: Integrated into motherboard
- Technology: Realtek RTL8111c
- Data transfer speeds: up to 10/100/1000 Mb/s (Gigabit Ethernet) LAN NOTE: Gigabit Ethernet is backwards compatible with 10/100 Mb/s network hardware.
- Transmission standards: 1000-Base-T Ethernet

### 802.11 wireless b/g/n PCI-Express Mini card

Figure 5: Wireless card - side view



Wireless card - side view

- Interface type: PCI
- Data transfer speeds: up to 300 Mbps (downlink), 150 Mbps (uplink)
- Transmission standards: 802.11 b/g/n
- Supported antenna connections: 2 internal
- Operating band: 2.4 GHz
- Supported security protocols:
  - WPA
  - WEP

## Hard drive

**640 GB**

**Figure 6: Hard drive**



Image of hard drive

- Size: 640 GB
- Interface: SATA
- Transfer rating: 3.0 Gb/sec
- Rotational Speed: 7200 RPM

## CD/DVD disc drive

### Supermulti Slimslot DVD drive

**Figure 7: Optical Drive**



Image of the optical drive

- Interface: SATA
- Data buffer memory: 2 MB
- Write and read speeds for supported formats and disc types are shown in this table:

Formats/Disc types	Write speeds	Read speeds	Storage capacity
<b>Blu-ray Disc</b>	Not supported		
<b>HD DVD</b>	Not supported		
<b>DVD</b>			
DVD-ROM SL	NA	up to 8x	up to 4.7 GB
DVD-ROM DL	NA	up to 6x	up to 8.5 GB
DVD+R SL	up to 8X	up to 8X	up to 4.7 GB
DVD+R DL	up to 6X	up to 6X	up to 8.5 GB
DVD+RW SL	up to 8X	up to 6X	up to 4.7 GB
DVD+RW DL	Not supported		
DVD-R SL	up to 8X	up to 8X	up to 4.7 GB
DVD-R DL	up to 6X	up to 6X	up to 8.5 GB

DVD-RW SL	up to 6X	up to 6X	up to 4.7 GB
DVD-RW DL	Not supported		
DVD-RAM	up to 5X	up to 5X	up to 4.7 GB
<b>CD</b>			
CDROM	NA	up to 24X	up to 700 MB
CDR	up to 24X	up to 24X	up to 700 MB
CDRW	up to 24X	up to 24X	up to 700 MB

## Memory Card Reader

### 5-in-1 multimedia card reader

Figure 8: View of memory card reader

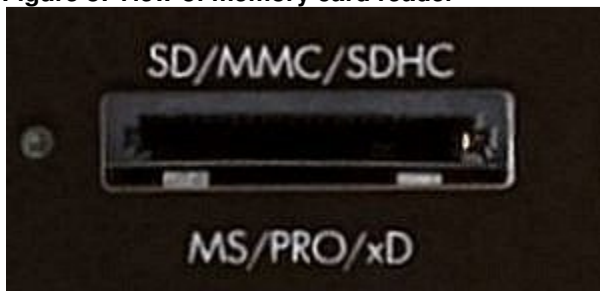


Image of card reader

Supports the following cards:

- Memory Stick (MS) and Memory Stick Pro (MS-Pro)
- MultiMediaCard (MMC)
- Secure Digital High Capacity (SDHC)
- Secure Digital (SD)
- xD Picture Card (xD)

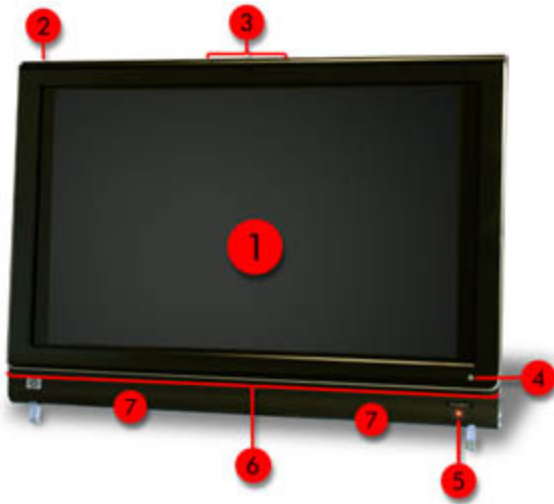
## Computer Case

### All-in-One

- Height: 49.53 cm (19.5 inches)
- Width: 66.04 cm (26.0 inches)
- Depth: 12.7 cm (5 inches)
- Weight: 13.608 Kg (30 lbs)

### Front of the system

Figure 9: Front of the system



1 - 22" LCD Touch Screen

2 - Event LED

3 - Webcam with array microphone

4 - HP TouchSmart button

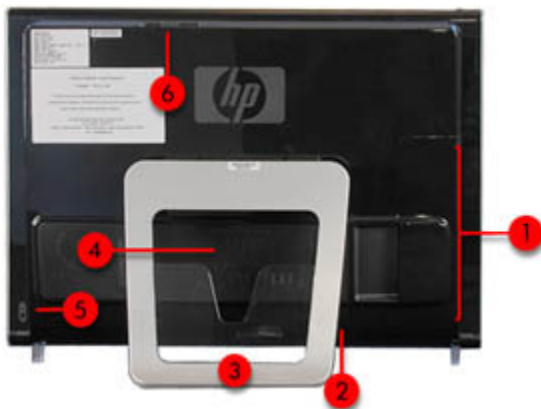
5 - Infrared receiver and activity light

6 - Ambient downlight

7 - Speakers

## Back of the system

Figure 10: Back of the system



1 - Removable I/O cover

2 - USB receiver for wireless keyboard and mouse lock slot

3 - Stand



4 - Memory cover

5 - Kensington lock slot

## Left side of the system

Figure 11: Left side of the system



1 - Headphone audio output

2 - Line-level audio input

3 - USB 2.0 ports

4 - Ambient light controller button

## Right side of the system

Figure 12: Right side of the system



1 - Power button

2 - Slim slot optical drive with eject button

3 - Hard drive activity indicator LED

4 - Volume buttons

5 - Mute button

6 - 5-in-1 media card reader

7 - 4-pin 1394 port

## Power Supply

### 230W

230W power supply (external)

## I/O Ports

### Left I/O ports

Figure 13: Left I/O ports



1 - Headphone audio output

2 - Line-level audio input

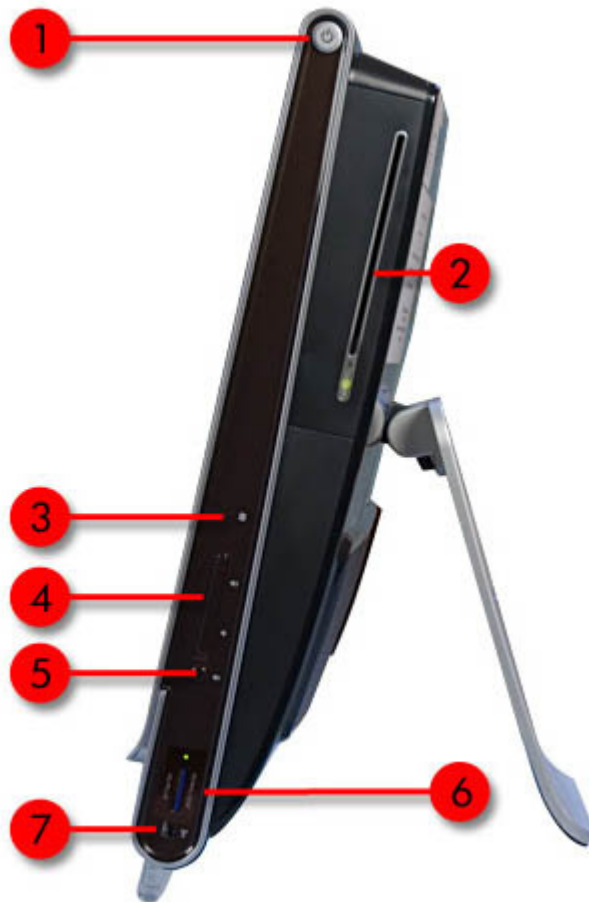
3 - USB 2.0 ports

4 - Ambient light controller button

Image of the left I/O ports

## Right I/O ports

Figure 14: Right I/O ports



1 - Power button

2 - Slim slot optical drive with eject button

3 - Hard drive activity indicator LED

4 - Volume buttons

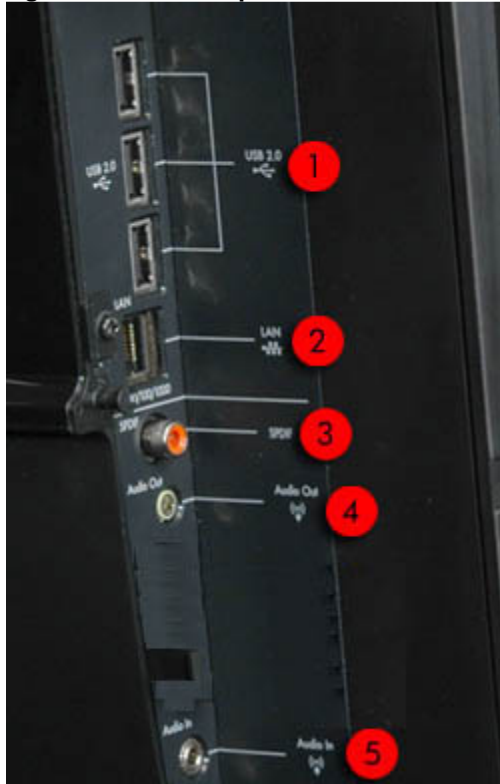
5 - Mute button

6 - 5-in-1 media card reader

7 - 4-pin 1394 port  
Image of the right I/O ports

## Back I/O ports

Figure 15: Back I/O ports



1 - Three USB 2.0 ports

2 - RJ45 10/100/1000BT ethernet

3 - SPDIF digital audio output

4 - Stereo audio output

5 - Stereo audio input

Image of the back I/O ports

## Keyboard, mouse and input devices

### HP 2.4 GHz wireless keyboard

Figure 16: Top view of keyboard



Image of keyboard

- Interface: wireless USB dongle
- Dimensions:
  - Height: 16.1 mm (0.6 inch)
  - Width: 154.0 mm (6.1 inches)
  - Length: 439.0 mm (17.3 inches)
- Special buttons\*:
  - Volume up
  - Volume down
  - Mute

\* Buttons are not configurable

- Extended Function Keys:
  - Help
  - Sleep
  - Chapter back
  - Rewind
  - Stop
  - Play/pause
  - Fast Forward
  - Chapter forward
  - Eject
  - Turn off display
  - Brightness down
  - Brightness up

## 2.4 GHz wireless optical mouse

Figure 17: Top view of mouse



Top view of mouse

- Interface:
  - Mouse: wireless
  - Receiver: USB

- Dimensions:
  - Length: 117.6 mm (4.63 inches)
  - Width: 64.3 mm (2.53 inches)
  - Height: 36.2 mm (1.43 inches)
- Buttons: left (select), right (context menu), scroll wheel (scroll up/scroll down)

## Remote control for Windows Media Center

Figure 18: View of remote control



Image of remote control

- Infrared remote control
- IR receiver is integrated into the PC
- Compatible with Windows Media Center
- Not a universal remote

## Webcam

Figure 19: Webcam with array microphone



A close up view of the web camera. The array microphones are located to the left and right of the camera lens.

## Software

### Titles that shipped with PC

**NOTE:** HP provides basic support for software that comes with the computer. For in-depth feature assistance, refer to the help section in the software or on the software vendor's Web site.

Software Category	Software Title	Supported by HP Application Recovery
Operating System	<ul style="list-style-type: none"> <li>Windows Vista Home Premium with Windows Media Center (64-bit) with Vista Service Pack 1</li> </ul>	<ul style="list-style-type: none"> <li>No</li> </ul>
CD/CD-RW/DVD/DVD+RW	<ul style="list-style-type: none"> <li>Windows Movie Maker &amp; Windows DVD Maker</li> <li>CyberLink DVD Suite 5</li> <li>MediaSmart DVD Premium 1.0</li> </ul>	<ul style="list-style-type: none"> <li>No</li> <li>Yes</li> <li>Yes</li> </ul>
Entertainment, Music & Games	<ul style="list-style-type: none"> <li>My HP Games</li> </ul>	<ul style="list-style-type: none"> <li>No</li> </ul>
Productivity	<ul style="list-style-type: none"> <li>Adobe Reader</li> <li>Microsoft Works 9</li> </ul>	<ul style="list-style-type: none"> <li>Yes</li> <li>Yes</li> </ul>
Imaging, Photography, Video & Film	<ul style="list-style-type: none"> <li>CyberLink YouCam</li> <li>muvee autoProducer</li> </ul>	<ul style="list-style-type: none"> <li>Yes</li> <li>Yes</li> </ul>
Security	<ul style="list-style-type: none"> <li>Norton Internet Security 2008 (60-day security update subscription)</li> </ul>	<ul style="list-style-type: none"> <li>Yes</li> </ul>
Support	<ul style="list-style-type: none"> <li>HP Total Care</li> </ul>	<ul style="list-style-type: none"> <li>No</li> </ul>

	Advisor <ul style="list-style-type: none"> <li>• HP Hardware Diagnostic Tools</li> <li>• Help &amp; Support Center</li> <li>• Online documentation</li> </ul>	<ul style="list-style-type: none"> <li>• Yes</li> <li>• No</li> <li>• No</li> </ul>
Recovery	<ul style="list-style-type: none"> <li>• HP Recovery Manager</li> </ul>	<ul style="list-style-type: none"> <li>• No</li> </ul>
Internet Solutions	<ul style="list-style-type: none"> <li>• Microsoft Internet Explorer</li> </ul>	<ul style="list-style-type: none"> <li>• No</li> </ul>