

**Kramer Electronics, Ltd.**



# **USER MANUAL**

**Model:**

**VM-4HDCP**

*1:4 DVI Distributor*

## Contents

<b>1</b>	<b>Introduction</b>	<b>1</b>
<b>2</b>	<b>Getting Started</b>	<b>1</b>
2.1	Quick Start	2
<b>3</b>	<b>Overview</b>	<b>3</b>
3.1	About HDCP	4
3.2	Defining EDID	4
3.3	Recommendations for Best Performance	4
<b>4</b>	<b>Your VM-4HDCP 1:4 DVI Distributor</b>	<b>4</b>
<b>5</b>	<b>Installing the VM-4HDCP in a Rack</b>	<b>7</b>
<b>6</b>	<b>Connecting a VM-4HDCP 1:4 DVI Distributor</b>	<b>8</b>
6.1	Acquiring EDID	9
6.1.1	Acquiring the EDID from a Selected Output	9
6.1.2	Restoring the Default EDID	10
<b>7</b>	<b>Technical Specifications</b>	<b>10</b>

## Figures

Figure 1:	VM-4HDCP 1:4 DVI Distributor	5
Figure 2:	Connecting a VM-4HDCP 1:4 DVI Distributor	9

## Tables

Table 1:	Front Panel VM-4HDCP 1:4 DVI Distributor Features	6
Table 2:	Rear Panel VM-4HDCP 1:4 DVI Distributor Features	6
Table 3:	Technical Specifications of the VM-4HDCP 1:4 DVI Distributor	10

## 1 Introduction

Welcome to Kramer Electronics! Since 1981, Kramer Electronics has been providing a world of unique, creative, and affordable solutions to the vast range of problems that confront the video, audio, presentation, and broadcasting professional on a daily basis. In recent years, we have redesigned and upgraded most of our line, making the best even better! Our 1,000-plus different models now appear in 11 groups<sup>1</sup> that are clearly defined by function.

Thank you for purchasing your Kramer **VM-4HDCP 1:4 DVI Distributor**. The **VM-4HDCP** is ideal for:

- Multiple screen applications
- Rental and staging

Each package includes the following items:

- **VM-4HDCP 1:4 DVI Distributor**
- Power cord
- This user manual<sup>2</sup>

## 2 Getting Started

We recommend that you:

- Unpack the equipment carefully and save the original box and packaging materials for possible future shipment
- Review the contents of this user manual
- Use Kramer high performance high-resolution cables<sup>3</sup>

---

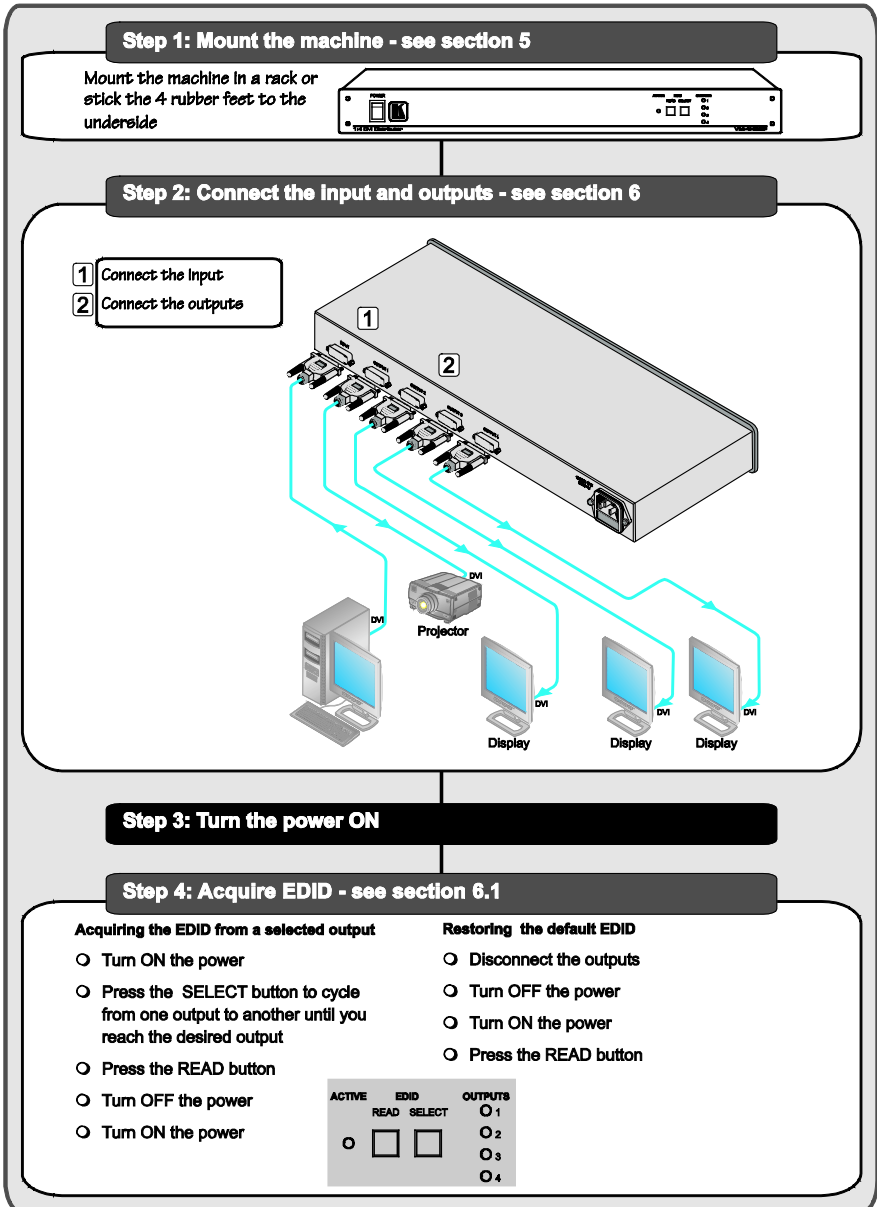
1 GROUP 1: Distribution Amplifiers; GROUP 2: Switchers and Matrix Switchers; GROUP 3: Control Systems; GROUP 4: Format/Standards Converters; GROUP 5: Range Extenders and Repeaters; GROUP 6: Specialty AV Products; GROUP 7: Scan Converters and Scalers; GROUP 8: Cables and Connectors; GROUP 9: Room Connectivity; GROUP 10: Accessories and Rack Adapters; GROUP 11: Sierra Products

2 Download up-to-date Kramer user manuals from our Web site at <http://www.kramerelectronics.com>

3 The complete list of Kramer cables is on our Web site at <http://www.kramerelectronics.com>

## 2.1 Quick Start

This quick start chart summarizes the basic setup and operation steps.



### 3 Overview

The Kramer **VM-4HDCP** is an HDCP (High-Bandwidth Digital Content Protection)<sup>1</sup> compatible 1:4 distribution amplifier for DVI-D (Digital) signals<sup>2</sup>. Since high-resolution DVI signals are very sensitive to cable quality and to PCB layout, the **VM-4HDCP** uses a uniquely designed PCB which includes all buffering, conditioning and amplifying circuitry to provide four high-level output signals.

In particular, the **VM-4HDCP**:

- Distributes signals having resolutions up to UXGA, including all HDTV formats
- Has a bandwidth of 1.65GHz
- Supports the DDWG DVI 1.0 standard
- Consists of a built-in re-clocking block that re-generates the DVI signal, so that several units may be cascaded
- Can read and store, in non-volatile memory, the EDID<sup>3</sup> block from one of the outputs, so it can then provide the EDID information to the DVI source even if the display device is not connected
- Has I-EDIDPro™ Kramer Intelligent EDID Processing™, an intelligent EDID handling and processing algorithm that ensures Plug and Play operation for DVI systems
- Has five DVI-I connectors, which are compatible with all types of DVI cables
- Is a cost-effective solution for distributing the TMDS signals used for DVI, and uses state-of-the-art line drivers on each of the 4 outputs

The **VM-4HDCP** fits in one vertical space of a standard 19" professional rack enclosure (1U).

---

1 Note that Kramer Electronics Limited is an HDCP Licensee, see <http://www.digital-cp.com/list/>

2 For HDMI applications, use the Kramer VM-4H (previously VM-4HDMI)

3 EDID is Extended Display Identification Data

### 3.1 About HDCP

The High-Bandwidth Digital Content Protection (HDCP) standard<sup>1</sup>, protects digital video and audio signals transmitted over DVI or HDMI connections between two HDCP-enabled devices to eliminate the reproduction of copyrighted material. To protect copyright holders (such as movie studios) from having their programs copied and shared, the HDCP standard provides for the secure, encrypted transmission of digital signals.

### 3.2 Defining EDID

The Extended Display Identification Data (EDID<sup>2</sup>) is a data-structure, provided by a display, to describe its capabilities to the source. The EDID enables the **VM-4HDCP** to “know” what kind of monitor is connected to the output. The EDID includes the manufacturer’s name, the product type, the timing data supported by the display, the display size, luminance data and (for digital displays only) the pixel mapping data.

### 3.3 Recommendations for Best Performance

Achieving the best performance means:

- Connecting only good quality connection cables, thus avoiding interference, deterioration in signal quality due to poor matching, and elevated noise levels (often associated with low quality cables)
- Avoiding interference from neighboring electrical appliances and positioning your **VM-4HDCP** away from moisture, excessive sunlight and dust

## 4 Your VM-4HDCP 1:4 DVI Distributor

[Figure 1](#) and [Table 1](#) define the **VM-4HDCP 1:4 DVI Distributor**:

---

<sup>1</sup> Developed by Intel

<sup>2</sup> Defined by a standard published by the Video Electronics Standards Association (VESA)

# Your VM-4HDCP 1:4 DVI Distributor

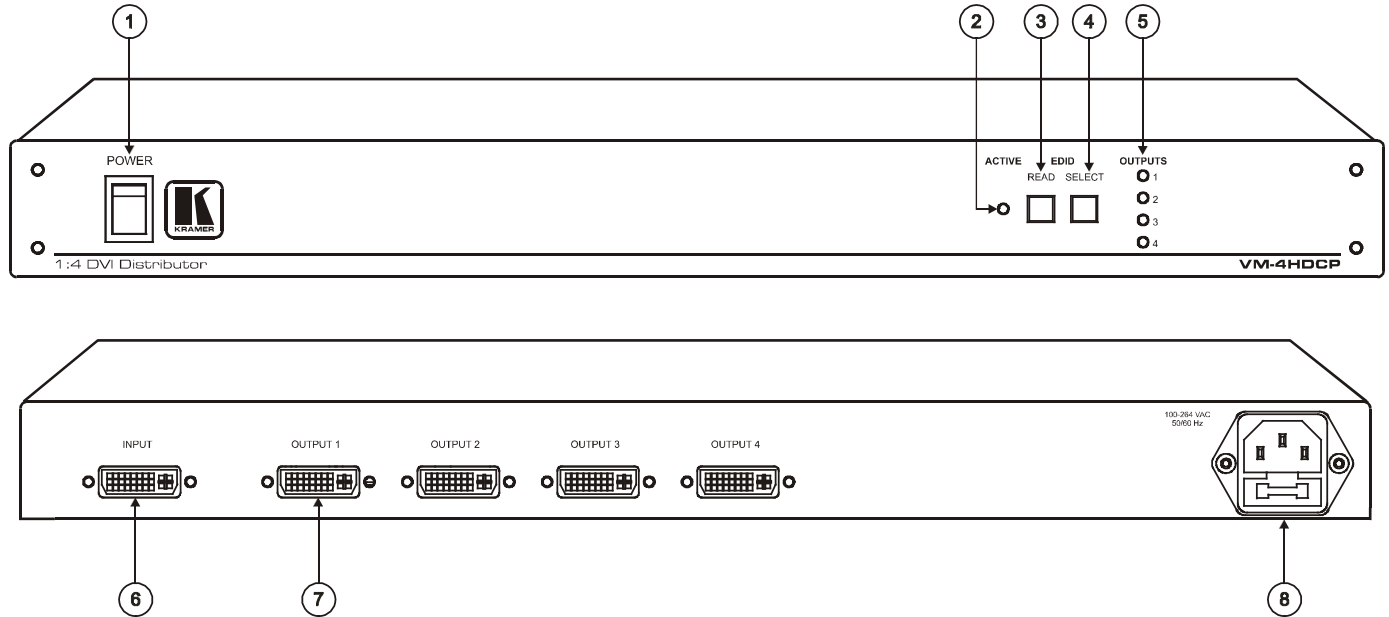


Figure 1: VM-4HDCP 1:4 DVI Distributor

*Table 1: Front Panel VM-4HDCP 1:4 DVI Distributor Features*

#	Feature	Function	
1	POWER Switch	Illuminated switch for turning the unit ON or OFF	
2	ACTIVE LED	Lights when the input is active; blinks when the input is not valid	
3	EDID	READ Button	Press to read the EDID of the selected display
4		SELECT Button	Select the desired display for EDID information
5	OUTPUT LEDs 1, 2, 3 and 4	LEDs light when an output(s) is connected and active; LEDs blink when selecting EDID (see section <a href="#">6.1</a> )	

*Table 2: Rear Panel VM-4HDCP 1:4 DVI Distributor Features*

#	Feature	Function
6	INPUT DVI Connector	Connects to the DVI source
7	OUTPUT DVI Connectors	Connect to the DVI acceptors (from 1 to 4)
8	Power Connector with Fuse	AC connector enabling power supply to the unit



## 5 Installing the VM-4HDCP in a Rack

This section provides instructions for rack mounting the unit.

### Before Installing in a Rack

Before installing in a rack, be sure that the environment is within the recommended range:

Operating temperature range	+5° to +45° C (41° to 113° F)
Operating humidity range	10 to 90% RHL, non-condensing
Storage temperature range	-20° to +70° C (-4° to 158° F)
Storage humidity range	5 to 95% RHL, non-condensing



### CAUTION!

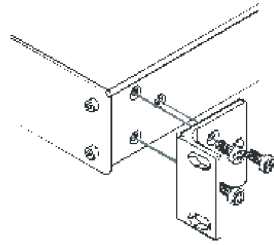
When installing on a 19" rack, avoid hazards by taking care that:

1. It is located within the recommended environmental conditions, as the operating ambient temperature of a closed or multi unit rack assembly may exceed the room ambient temperature.
2. Once rack mounted, enough air will still flow around the machine.
3. The machine is placed straight in the correct horizontal position.
4. You do not overload the circuit(s). When connecting the machine to the supply circuit, overloading the circuits might have a detrimental effect on overcurrent protection and supply wiring. Refer to the appropriate nameplate ratings for information. For example, for fuse replacement, see the value printed on the product label.
5. The machine is earthed (grounded) in a reliable way and is connected only to an electricity socket with grounding. Pay particular attention to situations where electricity is supplied indirectly (when the power cord is not plugged directly into the socket in the wall), for example, when using an extension cable or a power strip, and that you use only the power cord that is supplied with the machine.

### How to Rack Mount

#### To rack-mount a machine:

1. Attach both ear brackets to the machine. To do so, remove the screws from each side of the machine (3 on each side), and replace those screws through the ear brackets.



2. Place the ears of the machine against the rack rails, and insert the proper screws (not provided) through each of the four holes in the rack ears.

#### Note:

- In some models, the front panel may feature built-in rack ears
- Detachable rack ears can be removed for desktop use
- Always mount the machine in the rack before you attach any cables or connect the machine to the power
- If you are using a Kramer rack adapter kit (for a machine that is not 19"), see the Rack Adapters user manual for installation instructions available from: <http://www.kramerelectronics.com>

## 6 Connecting a VM-4HDCP 1:4 DVI Distributor

To connect the **VM-4HDCP** as illustrated in the example in [Figure 2](#), do the following:

1. Connect a DVI source (for example, a computer) to the INPUT connector.
2. Connect the 4 OUTPUT connectors<sup>1</sup> to up to 4 DVI acceptors, as follows:
  - OUTPUT 1 connector to DVI acceptor 1 (for example, a projector)
  - OUTPUT 2 connector to DVI acceptor 2 (for example, a display)
  - OUTPUT 3 connector to DVI acceptor 3 (for example, a display)
  - OUTPUT 4 connector to DVI acceptor 4 (for example, a display)
3. Connect the power cord to the mains electricity (not shown in [Figure 2](#)).

To use the **VM-4HDCP**, do the following:

1. Turn ON the POWER.
2. Acquire the EDID (see section [6.1](#)).

---

<sup>1</sup> Not all the outputs need to be connected

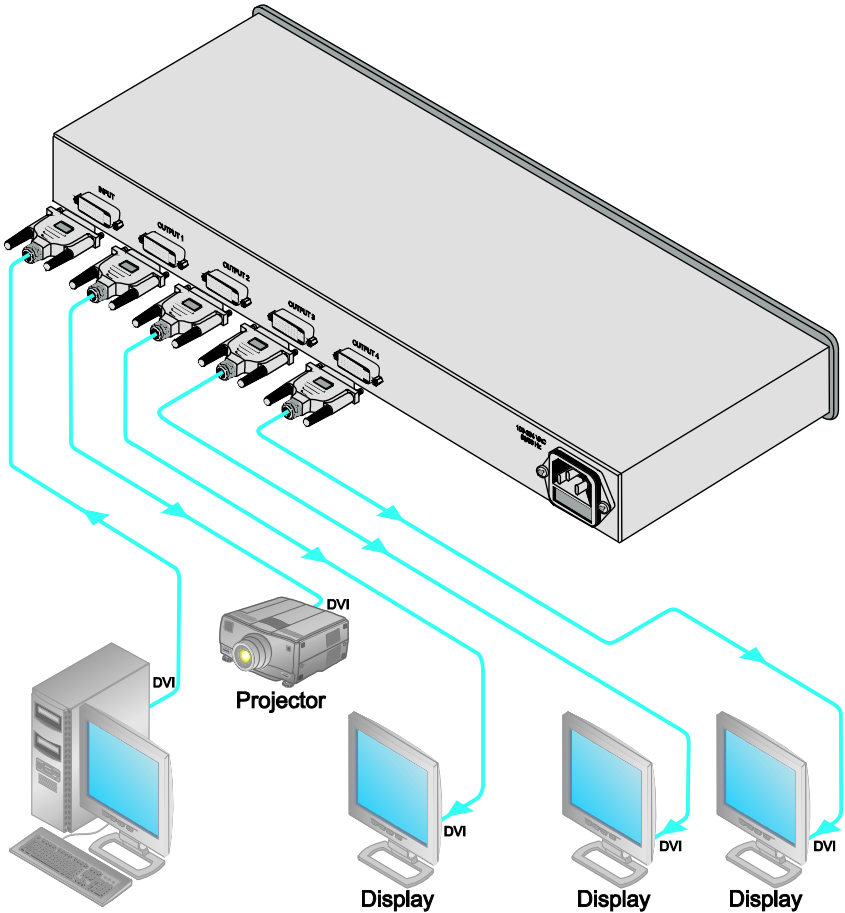


Figure 2: Connecting a VM-4HDCP 1:4 DVI Distributor

## 6.1 Acquiring EDID

The VM-4HDCP initially operates with the default EDID. This means that you can turn ON the power before connecting any of the acceptors or the source.

### 6.1.1 Acquiring the EDID from a Selected Output

You can either work with the default EDID or select an EDID from one of the connected outputs.

To select an EDID, do the following:

1. Press the SELECT button. The connected OUTPUT LEDs blink.
2. Press the SELECT button again to cycle from one output to another until reaching the desired output<sup>1</sup>.
3. Press the READ button.  
The blinking ceases and the button illuminates. The VM-4HDCP accesses the EDID of the selected output.  
The EDID of the selected output is stored in the non-volatile memory when the READ button no longer illuminates.
4. Turn OFF the power on the VM-4HDCP.
5. Turn ON the power.

### 6.1.2 Restoring the Default EDID

To restore the default EDID, do the following:

1. Disconnect each output.
2. Turn OFF the power.
3. Turn ON the power.  
The READ button flashes.
4. Press the READ button.  
The READ button illuminates. The default EDID is stored in the non-volatile memory when the READ button no longer illuminates.

## 7 Technical Specifications

[Table 3](#) includes the technical specifications:

*Table 3: Technical Specifications<sup>2</sup> of the VM-4HDCP 1:4 DVI Distributor*

INPUT:	1 DVI, 1.2Vpp on a DVI Molex 24pin female connector; DDC signal 5Vpp (TTL)
OUTPUTS:	4 DVI, 1.2Vpp on DVI Molex 24pin female connectors; DDC signal 5Vpp (TTL)
BANDWIDTH:	1.65GHz
CONTROLS:	SELECT and READ buttons for selecting and storing EDID information
POWER SOURCE:	100-264 VAC, 50/60Hz 11VA
DIMENSIONS:	19-inch (W), 7-inch (D), 1U (H)
WEIGHT:	2.5 kg. (5.5 lbs.) approx.
ACCESSORIES:	Power cord, rack "ears"
OPTIONS:	Kramer DVI cables <sup>3</sup>

---

1 After cycling once through all the outputs, the blinking will resume and you will have to start this procedure again to choose the desired output

2 Specifications are subject to change without notice

3 The complete list of Kramer cables is on our Web site at <http://www.kramerelectronics.com>

---

## LIMITED WARRANTY

Kramer Electronics (hereafter *Kramer*) warrants this product free from defects in material and workmanship under the following terms.

### HOW LONG IS THE WARRANTY

Labor and parts are warranted for three years from the date of the first customer purchase.

### WHO IS PROTECTED?

Only the first purchase customer may enforce this warranty.

### WHAT IS COVERED AND WHAT IS NOT COVERED

Except as below, this warranty covers all defects in material or workmanship in this product. The following are not covered by the warranty:

1. Any product which is not distributed by Kramer, or which is not purchased from an authorized Kramer dealer. If you are uncertain as to whether a dealer is authorized, please contact Kramer at one of the agents listed in the Web site [www.kramerelectronics.com](http://www.kramerelectronics.com).
2. Any product, on which the serial number has been defaced, modified or removed, or on which the WARRANTY VOID IF TAMPERED sticker has been torn, reattached, removed or otherwise interfered with.
3. Damage, deterioration or malfunction resulting from:
  - i) Accident, misuse, abuse, neglect, fire, water, lightning or other acts of nature
  - ii) Product modification, or failure to follow instructions supplied with the product
  - iii) Repair or attempted repair by anyone not authorized by Kramer
  - iv) Any shipment of the product (claims must be presented to the carrier)
  - v) Removal or installation of the product
  - vi) Any other cause, which does not relate to a product defect
  - vii) Cartons, equipment enclosures, cables or accessories used in conjunction with the product

### WHAT WE WILL PAY FOR AND WHAT WE WILL NOT PAY FOR

We will pay labor and material expenses for covered items. We will not pay for the following:

1. Removal or installations charges.
2. Costs of initial technical adjustments (set-up), including adjustment of user controls or programming. These costs are the responsibility of the Kramer dealer from whom the product was purchased.
3. Shipping charges.

### HOW YOU CAN GET WARRANTY SERVICE

1. To obtain service on you product, you must take or ship it prepaid to any authorized Kramer service center.
2. Whenever warranty service is required, the original dated invoice (or a copy) must be presented as proof of warranty coverage, and should be included in any shipment of the product. Please also include in any mailing a contact name, company, address, and a description of the problem(s).
3. For the name of the nearest Kramer authorized service center, consult your authorized dealer.

### LIMITATION OF IMPLIED WARRANTIES

All implied warranties, including warranties of merchantability and fitness for a particular purpose, are limited in duration to the length of this warranty.

### EXCLUSION OF DAMAGES

The liability of Kramer for any effective products is limited to the repair or replacement of the product at our option. Kramer shall not be liable for:

1. Damage to other property caused by defects in this product, damages based upon inconvenience, loss of use of the product, loss of time, commercial loss, or;
2. Any other damages, whether incidental, consequential or otherwise. Some countries may not allow limitations on how long an implied warranty lasts and/or do not allow the exclusion or limitation of incidental or consequential damages, so the above limitations and exclusions may not apply to you.

This warranty gives you specific legal rights, and you may also have other rights, which vary from place to place.

**NOTE:** All products returned to Kramer for service must have prior approval. This may be obtained from your dealer.

This equipment has been tested to determine compliance with the requirements of:

- EN-50081: "Electromagnetic compatibility (EMC);  
generic emission standard.  
Part 1: Residential, commercial and light industry"
- EN-50082: "Electromagnetic compatibility (EMC) generic immunity standard.  
Part 1: Residential, commercial and light industry environment".
- CFR-47: FCC\* Rules and Regulations:  
Part 15: "Radio frequency devices  
Subpart B Unintentional radiators"

### CAUTION!

- ⊗ Servicing the machines can only be done by an authorized Kramer technician. Any user who makes changes or modifications to the unit without the expressed approval of the manufacturer will void user authority to operate the equipment.
- ⊗ Use the supplied DC power supply to feed power to the machine.
- ⊗ Please use recommended interconnection cables to connect the machine to other components.

\* FCC and CE approved using STP cable (for twisted pair products)





---

**For the latest information on our products and a list of Kramer distributors, visit our Web site: [www.kramerelectronics.com](http://www.kramerelectronics.com), where updates to this user manual may be found. We welcome your questions, comments and feedback.**



**Caution**

**Safety Warning:**

Disconnect the unit from the power supply before opening/servicing.



---

**Kramer Electronics, Ltd.**

Web site: [www.kramerelectronics.com](http://www.kramerelectronics.com)

E-mail: [info@kramerel.com](mailto:info@kramerel.com)

**P/N: 2900-000193 REV 2**